

Parameter Specification Table of PrefabX-SPD III-E-L20

Dimensions

- Unfold Size (L*W*H) : 5960mm*4385mm*2548mm
- Packing Size (L*W*H): 5960mm*2300mm*2548mm (40HQ loads 2 units)
- Interior Ceiling Height: 2350mm
- Area: 26.1m² Net Indoor Area: 24.1m²

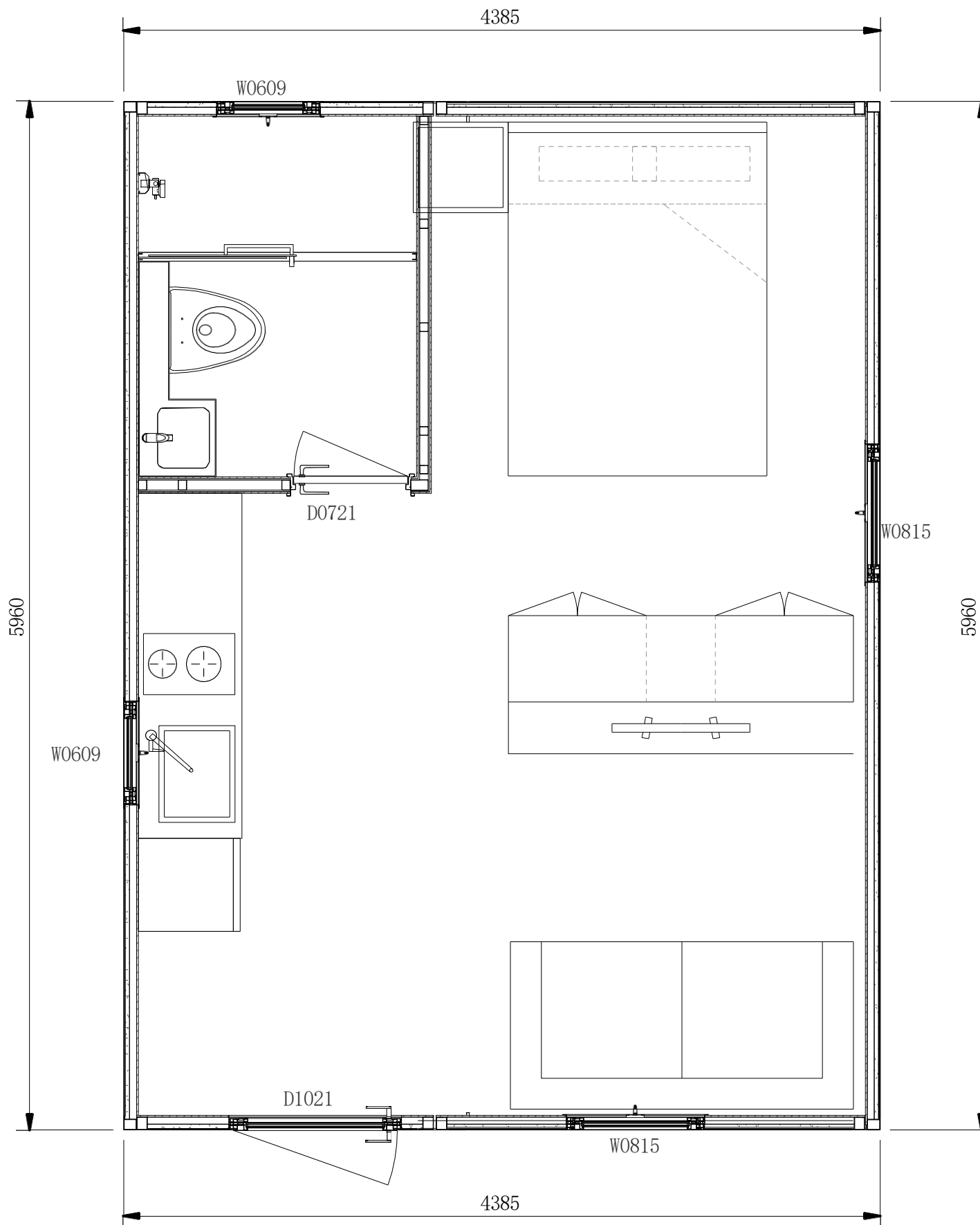
Load Information

- Wind Load: 3.0KN/M²
- Floor Load: 2.0KN/M²
- Roof Dead Load: 0.5KN/M²
- Snow Load: 1.5KN/M²
- Bathroom Load: 2.5KN/M²
- Floor Load: Roof 0.5KN/M²
- Live Load:

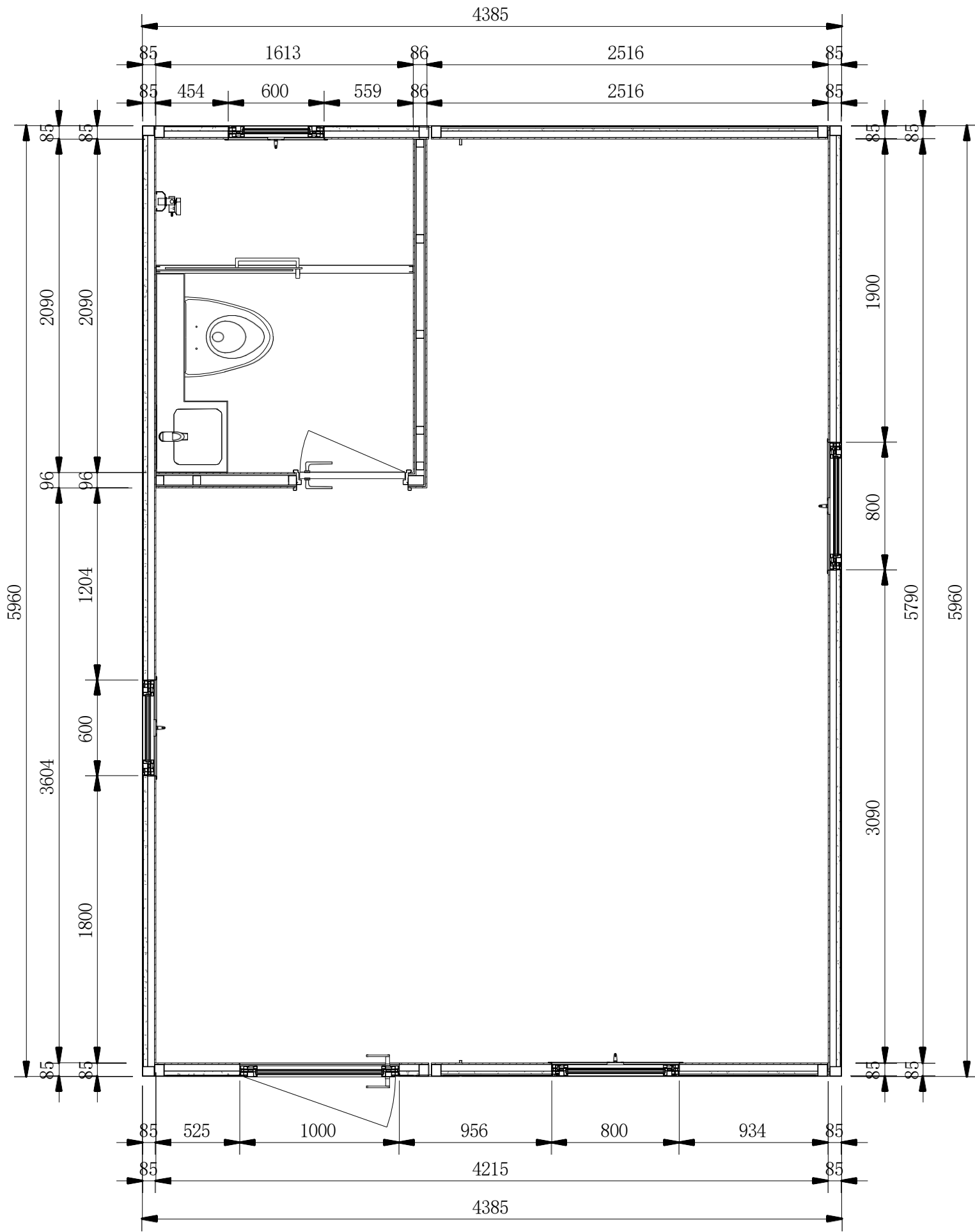
Parameter Information

- Seismic Resistance Level: Grade 9
- Synthetic R-value: 20 ft²hr²F/BIU
- Fire Resistance Level: Grade 3(0.5 HOUR)
- Sound Proof Coefficient: ≥60db

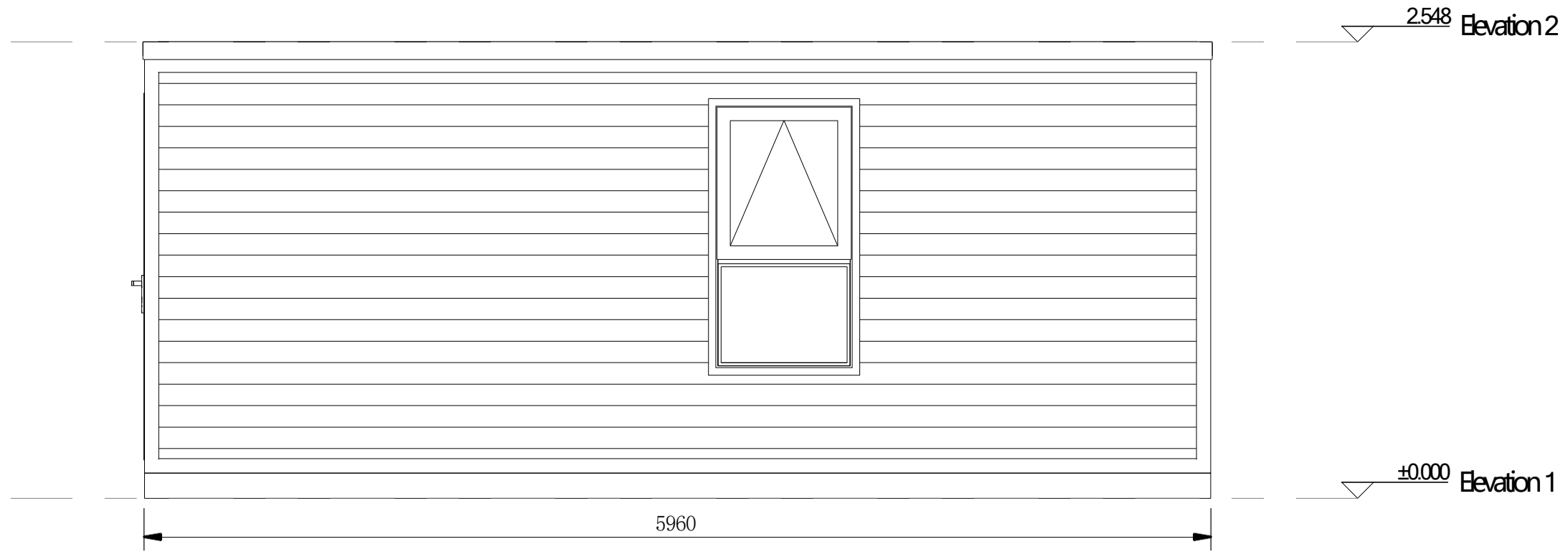
Catalog		
Drawing Number	Drawing Name	Remark
J0-01	Layout Plan	
J0-02	Detailed Size Plan	
J0-03	Elevation Plan	
J0-04	Elevation Plan	
J0-05	Section Plan	
J0-06	3D Plan	
J0-07	3D Plan	
J0-08	Socket Plan	
J0-09	Lighting Plan	
J0-10	Water Supply and Drainage System Plan	
J0-11	Door and Window Plan	



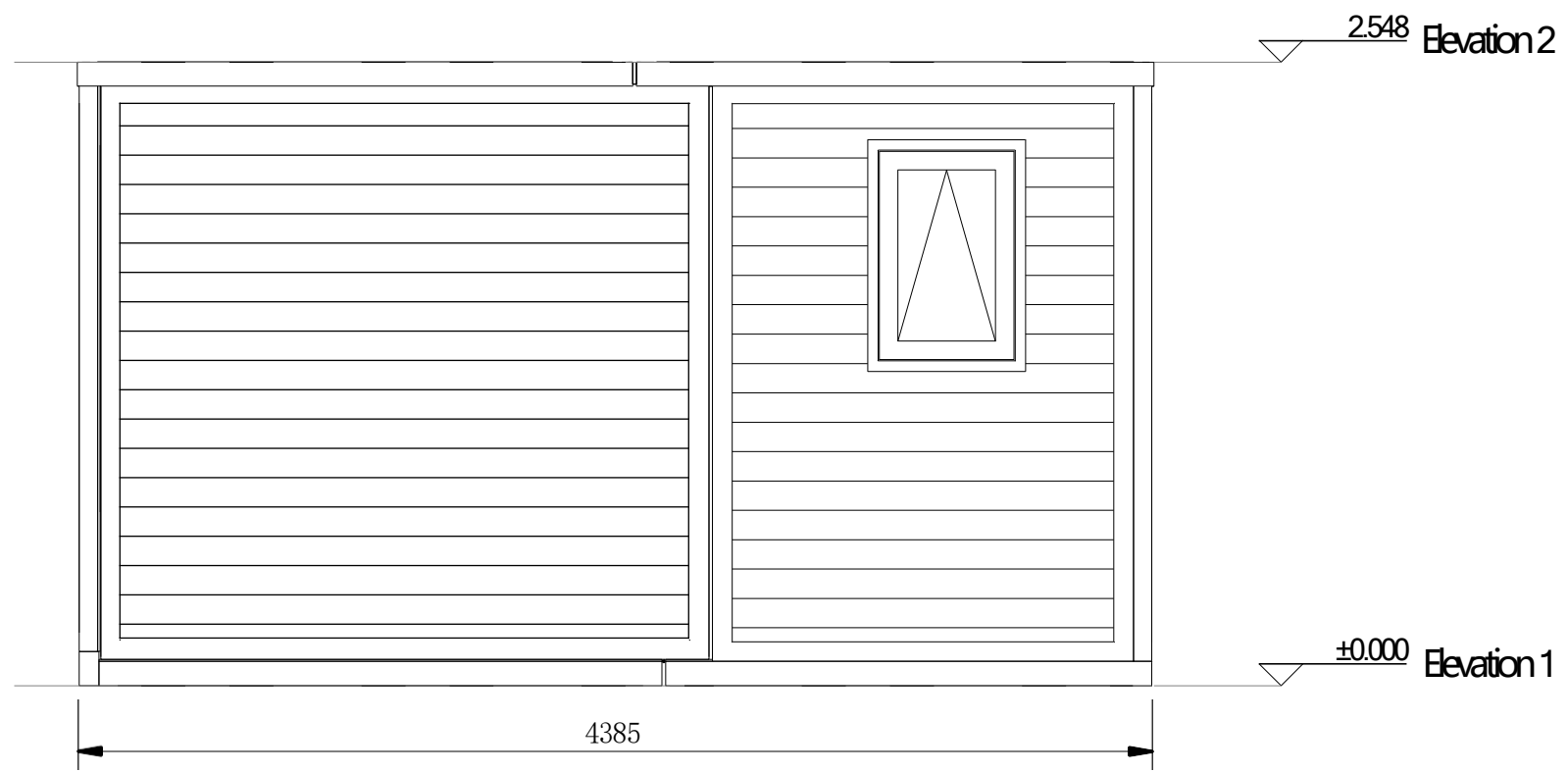
Layout Plan



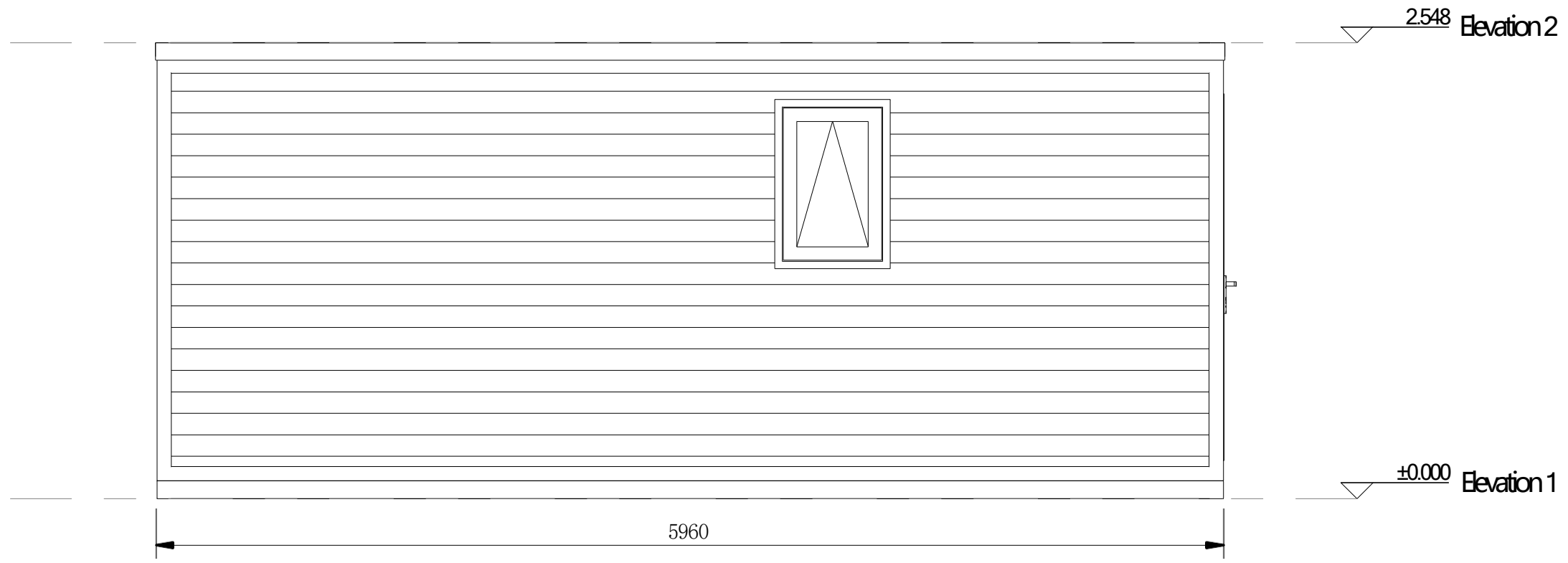
Detailed Size Plan



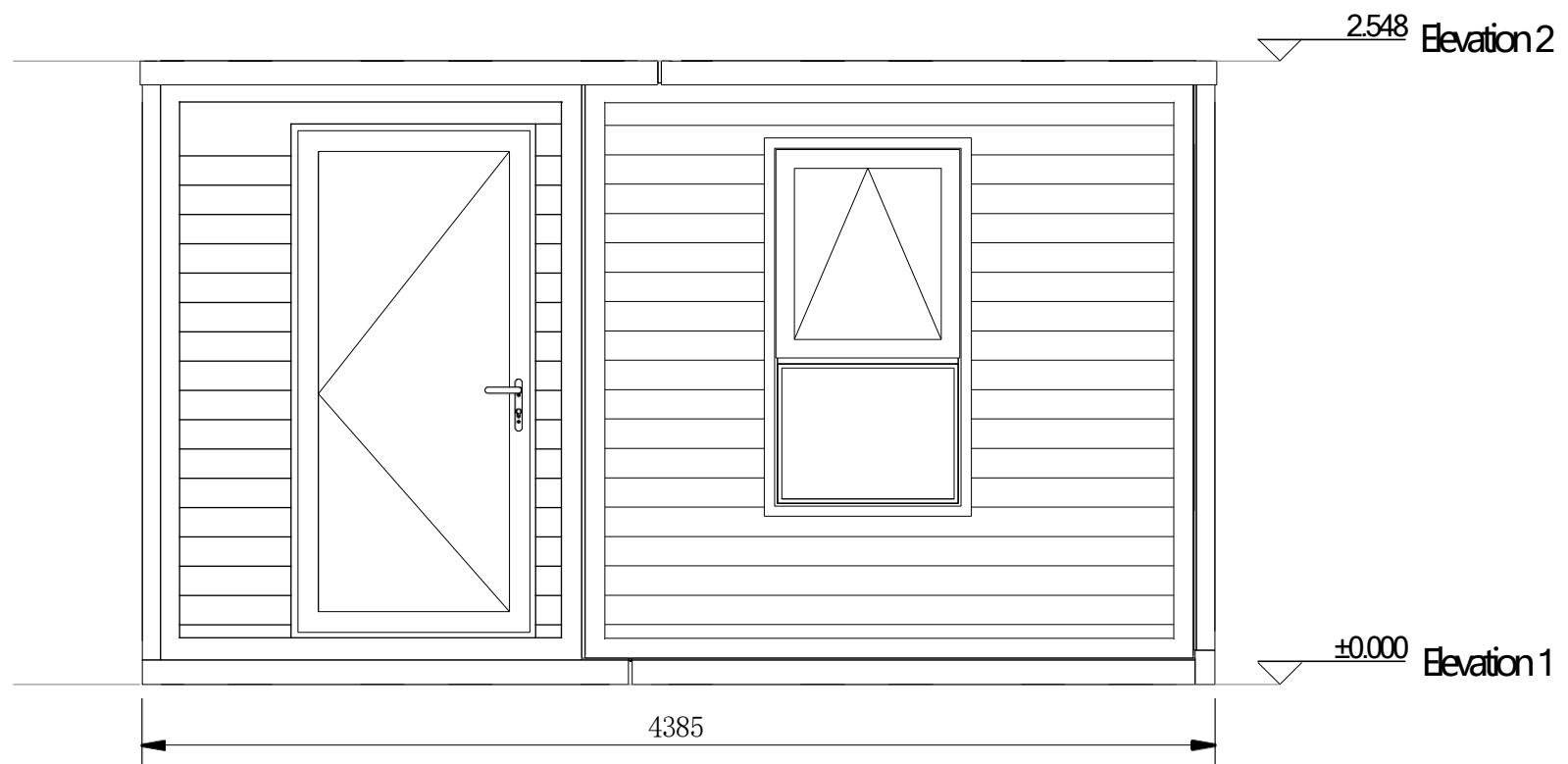
East Elevation



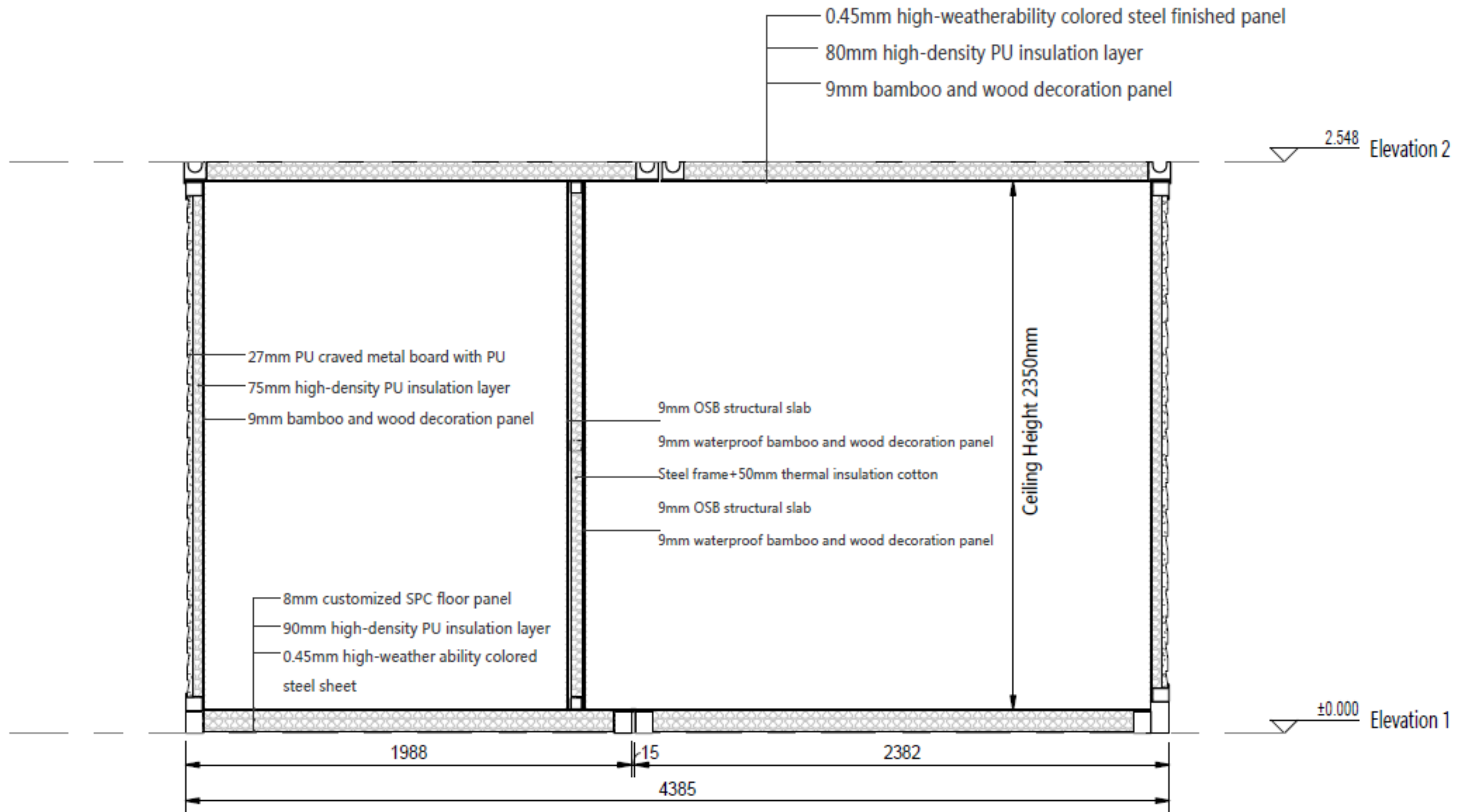
North Elevation



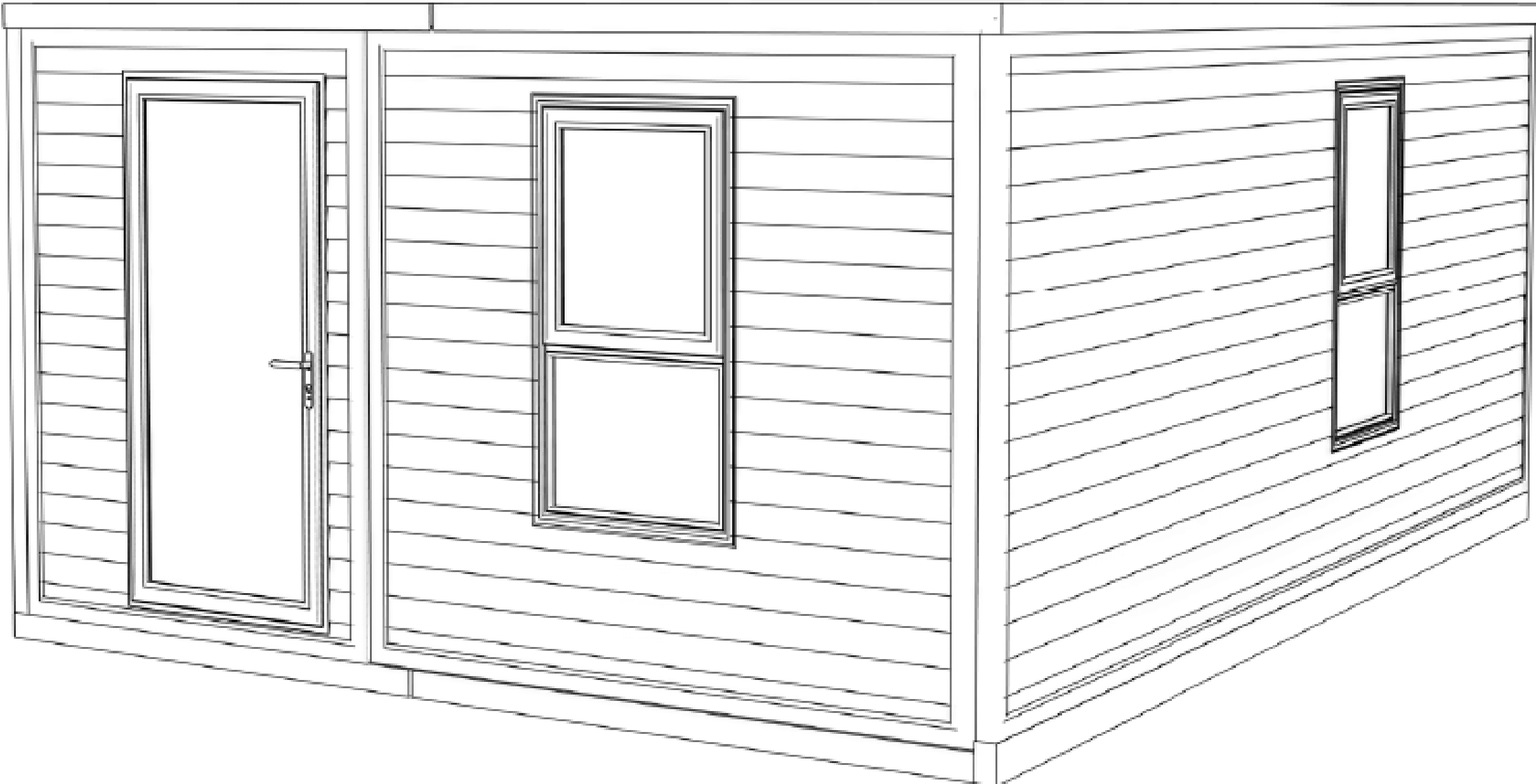
West Elevation

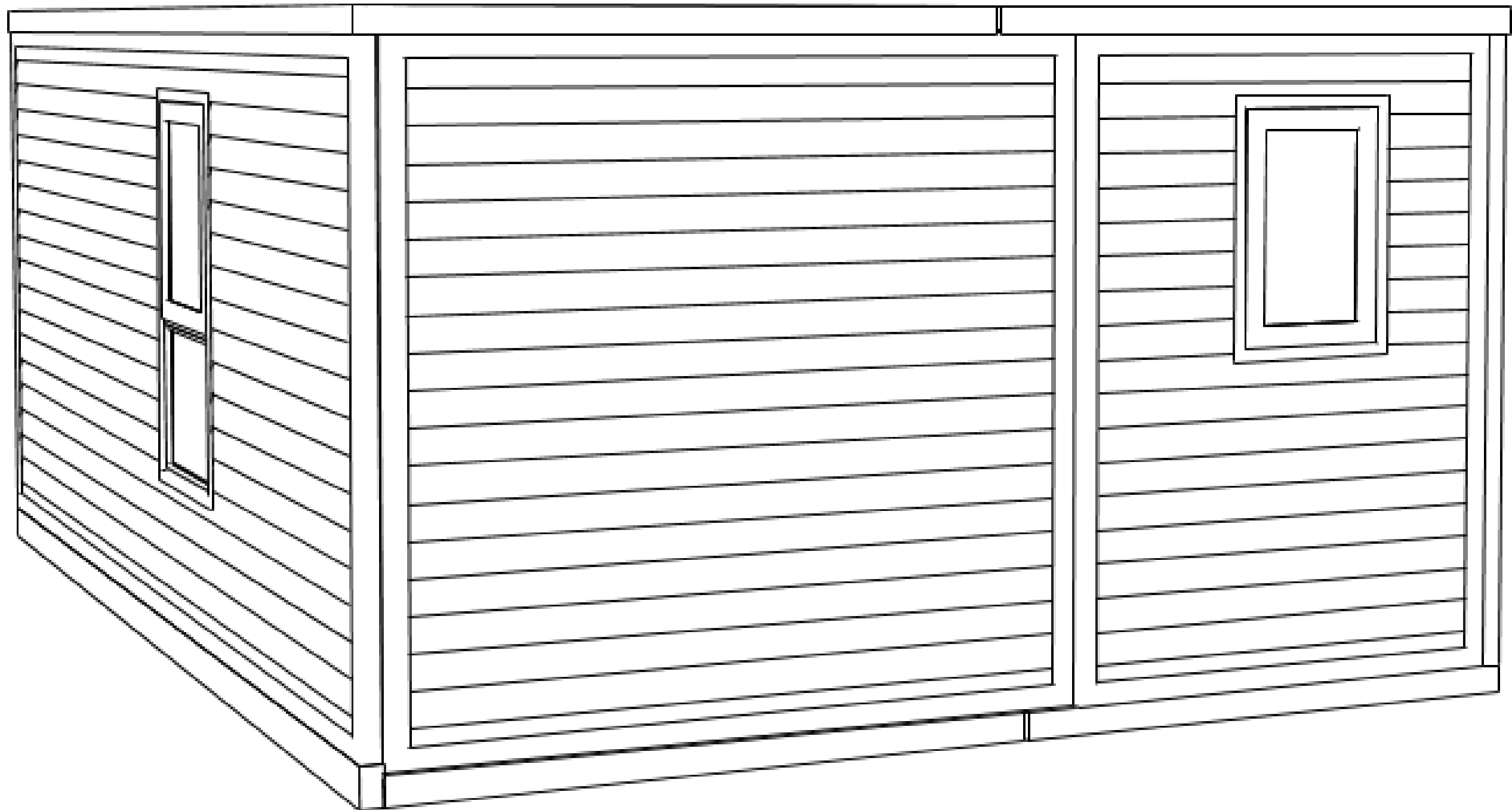


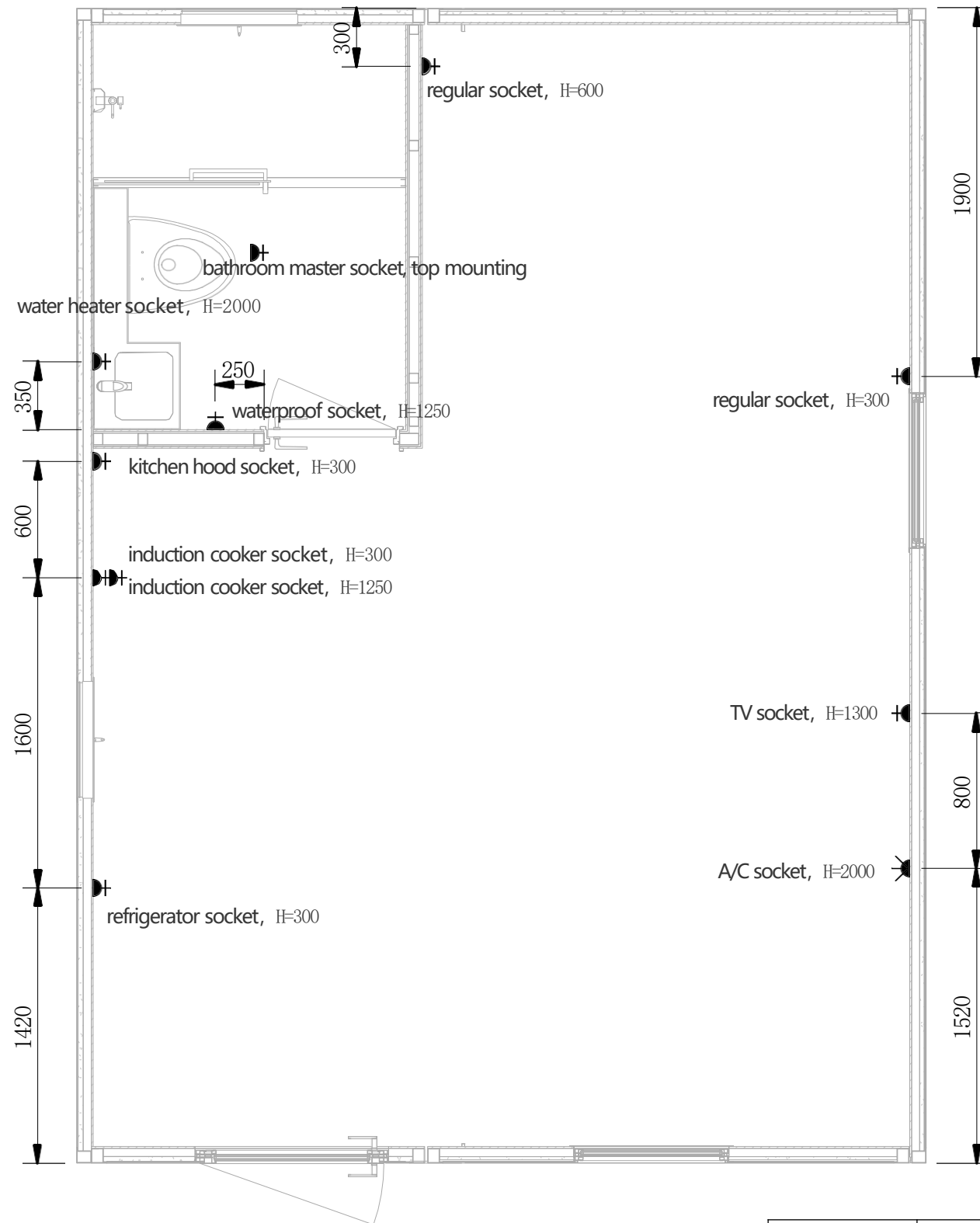
South Elevation



Section Plan



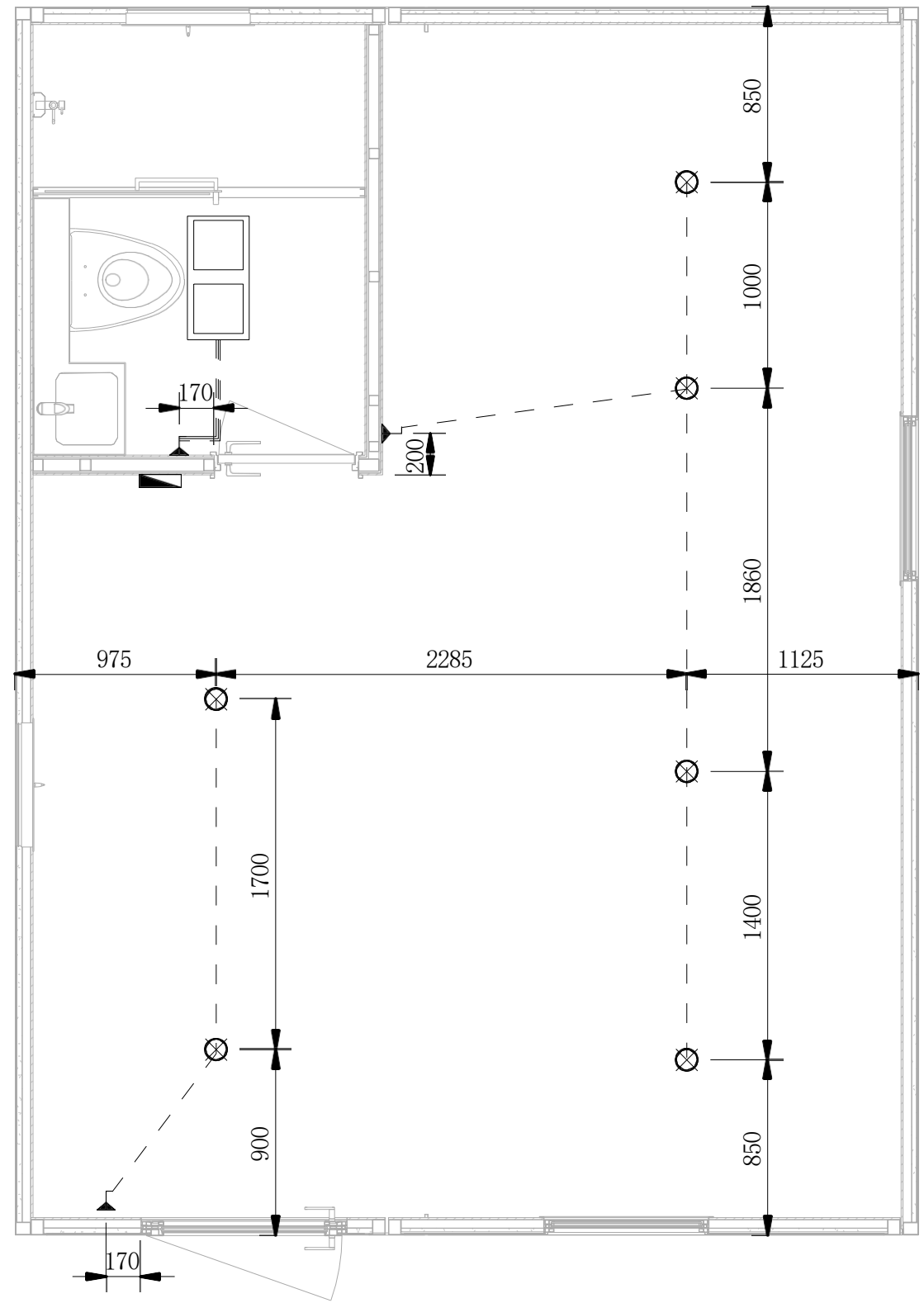




Socket Plan



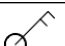
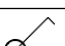
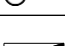
	EN/AS/GB Socket Legend	ASTM Socket Legend
⏏ ^u	220v socket with USB	110v ASTM socket with USB
⏏	220v socket	110v ASTM socket
⏏ ^h	220v high-power socket	220v ASTM high-power socket

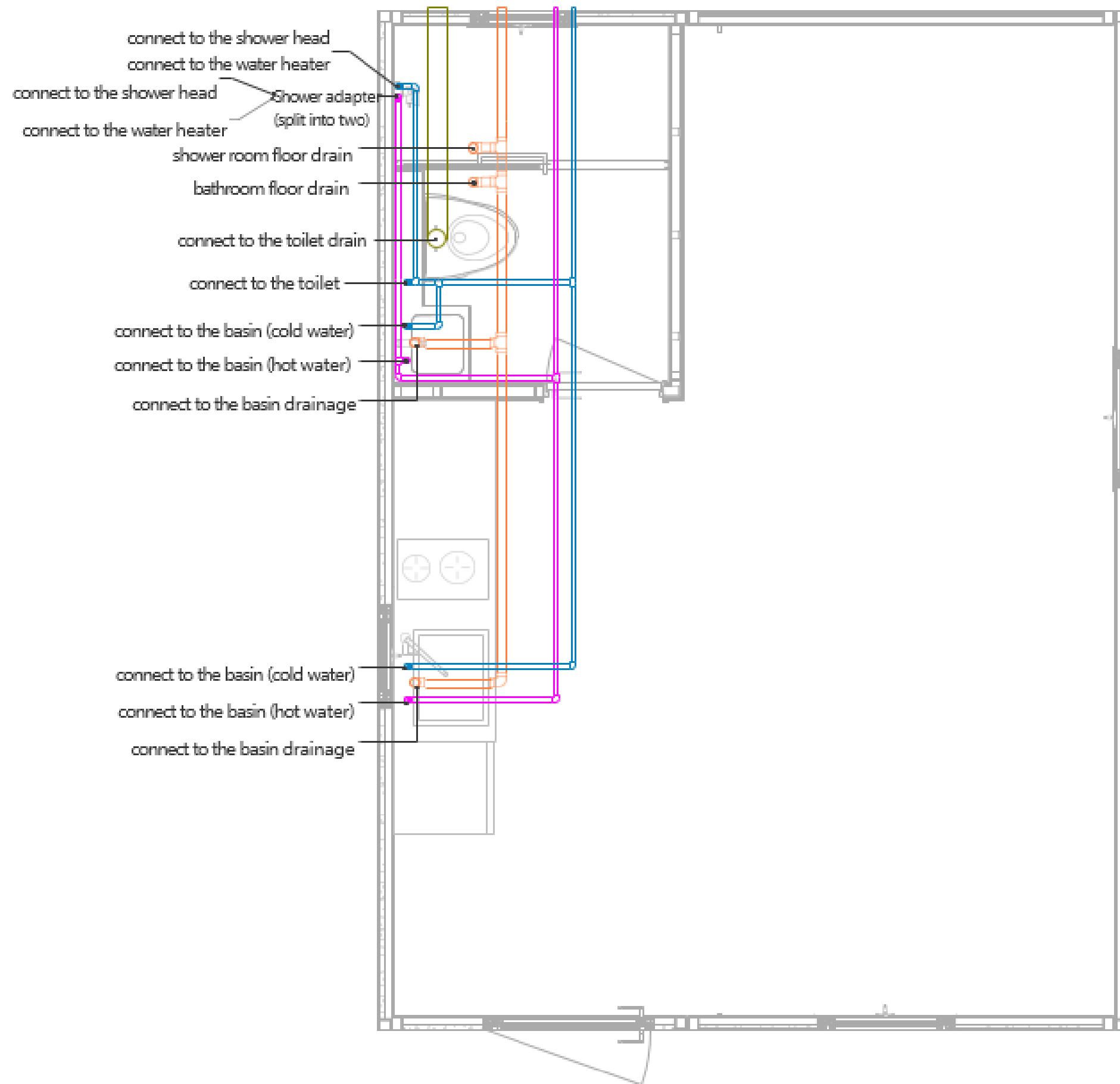
Note: the socket plan applies to ASTM/EN/AS/GB, and the socket panel needs to be replaced accordingly.



Lighting Plan

Lighting Legend

	LED Ultra-thin Downlight, 20w, White
	LED Bathroom Light, 300x300
	Single League Double Switch
	Single Control Switch
	Distribution Box



Water Supply and Drainage System Plan

