



X-Spacehome Detachable Container House





CONTENTS.



Size | Structure



Loading | Installing



Project show



Comparison



01

Size | Structure





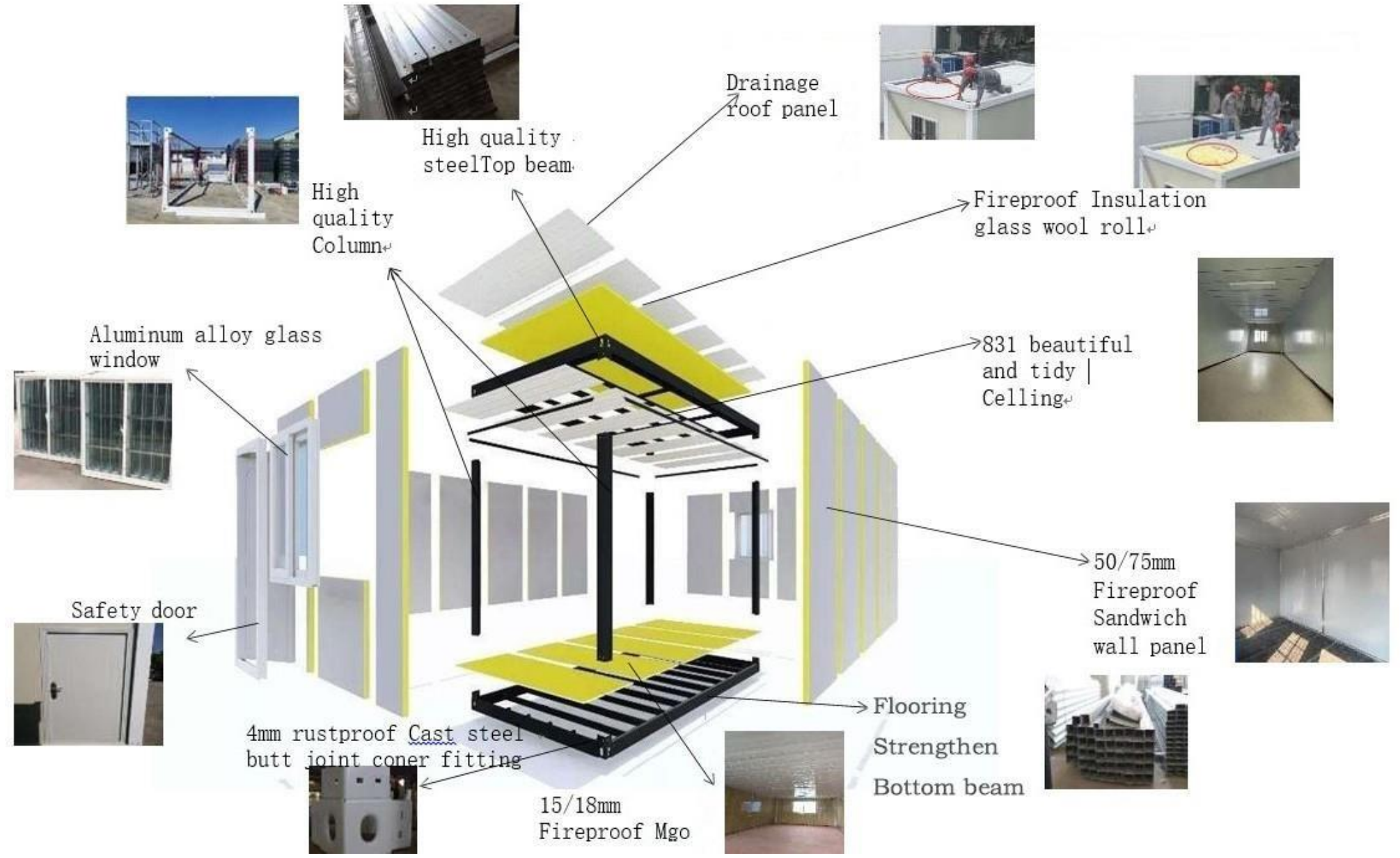
Standard one size (4 Workers +3 Hours=1 House)

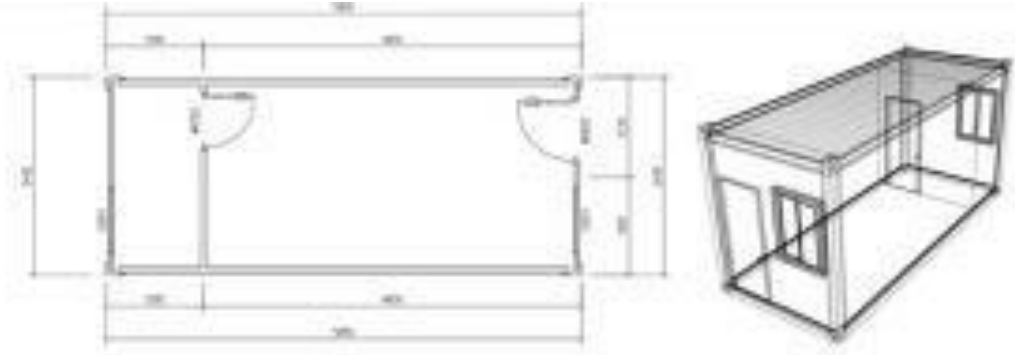
DetachableContainer	Length	Width	Height	Area	Weight
Size	6000mm	3000mm	2850mm	18m ²	1250kg



Windproof: 12 grades 32.7-41.4m/s

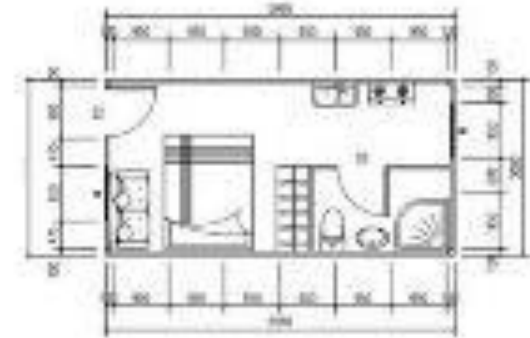
Shockproof: 9 grades Useful life: 15 years





Feature:

1. Galvanized steel structure.
2. 50mm EPS/Fireproof Glass WoollRock Wool Sandwich panel for wall.
3. 0.476mm steel sheet 50mm glass wool+steel sheet ceiling for roof.
4. Aluminum Sliding Windows with Security Bar.
5. Steel door
6. 18mm MGO board floor.





02

Loading and Installation



Loading by Shipping container

1*20GP=6units

1*40HQ=16units

Pack and Load





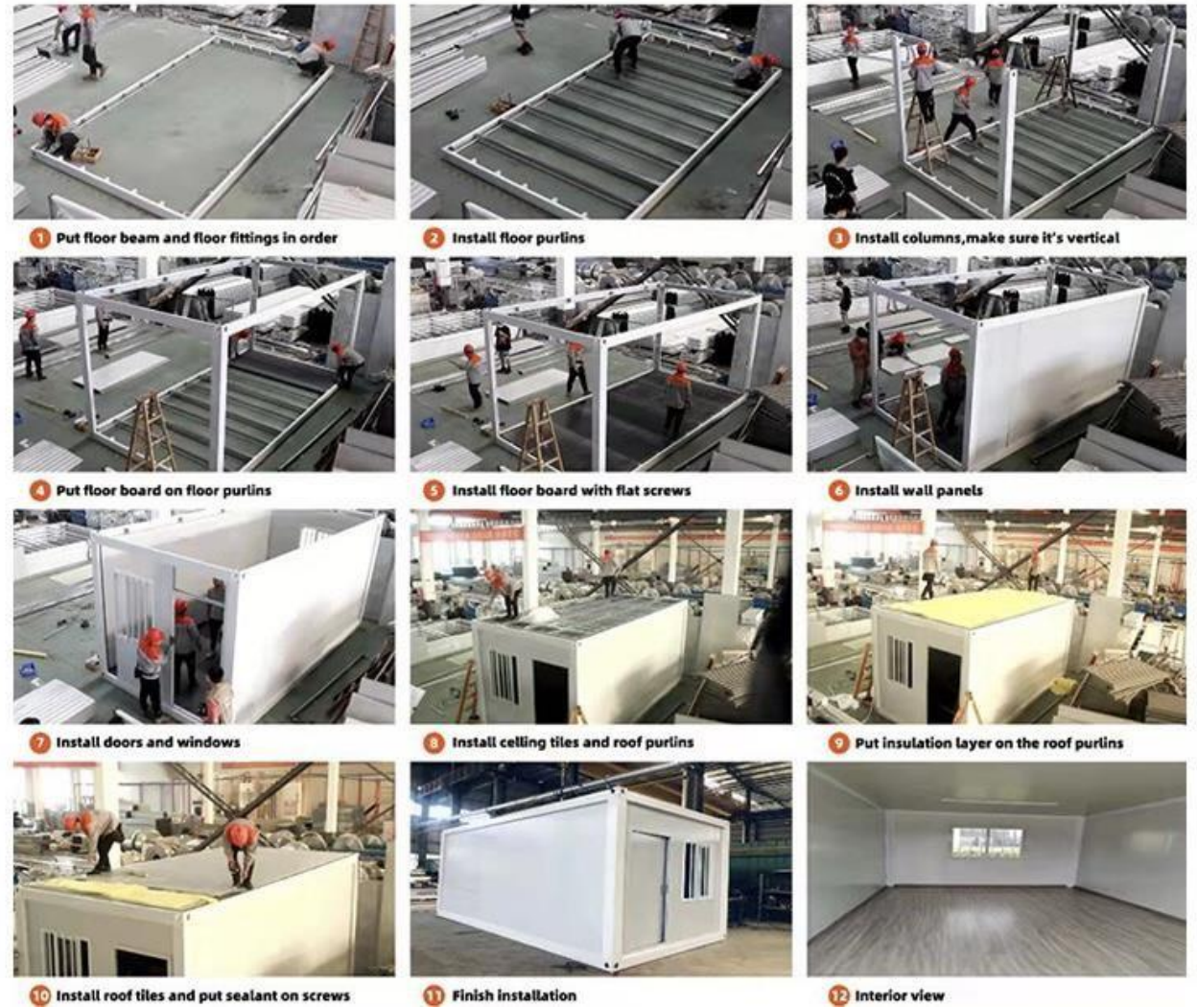
Loading by Shipping container

Packing of parts





Steps of installation





03

Project Show





container house - functional customization

Typical projects





container house - functional customization

Connection



Outside



Three floors dormitory





container house-situation customization

Hospital



School



Public toilet





custom outside look

Other custom outside look





custom outside look

Other custom outside color





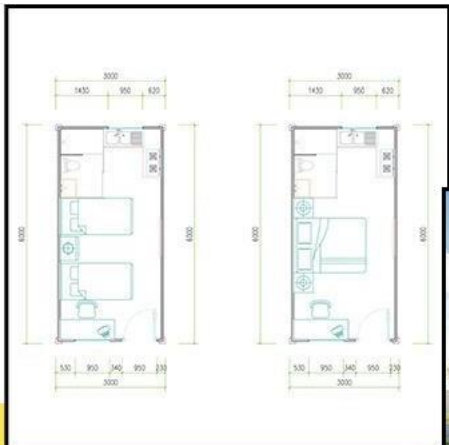
custom outside look

Interior layout





custom outside look



ONE ROOM



TWO ROOMS ONE HALL

OPTIONAL DECORATIONS

Optional decoration, please contact customer service for details

Exterior Decoration



01



Window



02



Door



03



Switch socket light



04





custom outside look

DESIGN SERVICE

Real picture **Effect picture** **CAD drawing**

Interior view 1: Bathroom with toilet, sink, and shower.

Interior view 2: Long hallway with doors and windows.

Interior view 3: Dining area with tables and chairs.



custom outside look

DORMITORY PROJECT



 **Click us!**



04

Comparison





Our advantage

Comparison with lower price products



VS





Our advantage

Comparison with lower price products



VS





Our advantage

Comparison with lower price products



VS





Our advantage

Comparison with lower price products



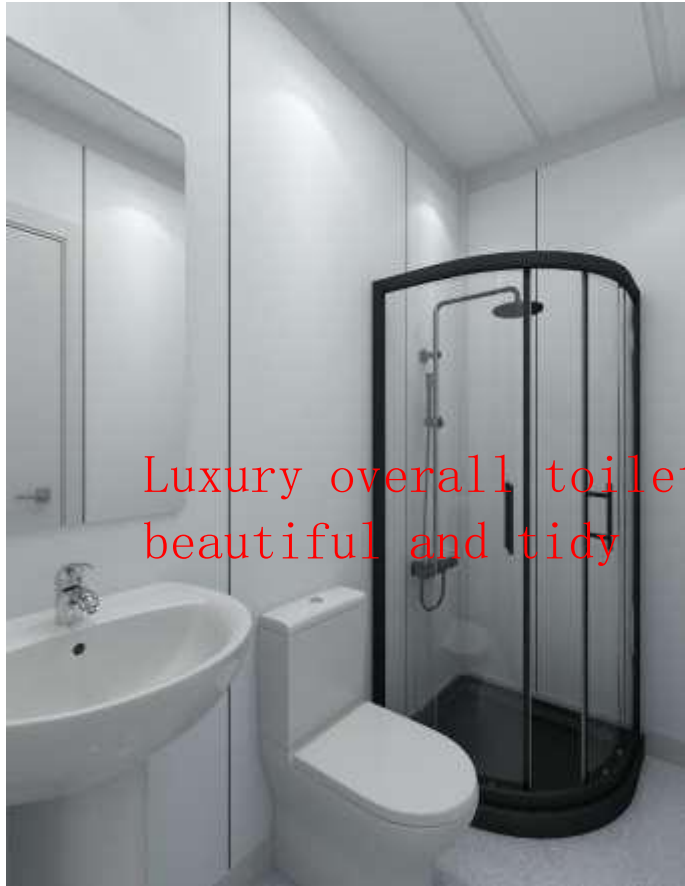
VS





Our advantage

Comparison with lower price products



Luxury overall toilet,
beautiful and tidy

VS



Non wet and dry
separated and simple



Why their price lower?

- 1. The profile is made of black iron, which is easy to be oxidized and rusted. As long as the paint on the surface falls out of the rain, it will rust within a month**
- 2. All profile accessories are falsely reported and not actually stuck**
- 3. The density of wall insulation rock wool is only 20-40kg**



Our advantage

International Certification Registrar



Verification of Conformity

S/N: 003289

No.: ICR Polska/VC/HE220805

Name and address of Applicant

Anyang Zhong Zheng Steel Structure Co., Ltd.
Northwest corner of the intersection of Yingbin Road and Tengfei Road ,Guxian Town ,
Tangyin Country ,Anyang City ,Henan Province,China.

Name and address of manufacturer:

Anyang Zhong Zheng Steel Structure Co., Ltd.
Northwest corner of the intersection of Yingbin Road and Tengfei Road ,Guxian Town ,
Tangyin Country ,Anyang City ,Henan Province,China.

Product name:

expandable container house detachable container house foldable container house

Product types:

dcgtsy-63118-001, dcgtsy-63118-002, dcgtsy-63118-003, dcgtsy-63118-004,
dcgtsy-63118-005, dcgtsy-63118-006, dcgtsy-63118-007, dcgtsy-63118-008,
dcgtsy-63118-009, dcgtsy-63118-010, dcgtsy-6359-001, dcgtsy-6359-002,
dcgtsy-6359-003, dcgtsy-6359-004, dcgtsy-6359-005, dcgtsy-6359-006,
dcgtsy-6359-007, dcgtsy-6359-008, dcgtsy-6359-009, dcgtsy-6359-010,
dcgtsy-6390-001, dcgtsy-6390-002, dcgtsy-6390-003, dcgtsy-6390-004,
dcgtsy-6390-005, dcgtsy-6390-006, dcgtsy-6390-007, dcgtsy-6390-008,
dcgtsy-6390-009, dcgtsy-6390-010

Product trademark:

n/a

This document confirms that the product sample meets the requirements of the following standards:

- Related with Regulation (EU) 305/2011:
EN 1090-1:2009+A1:2011

The assessment process has been carried out in accordance with individual rules and conditions agreed with the applicant. Evaluation has been carried out in accordance with:

Test reports:

CE-HR20220825-HBDC-1

Tests conducted by:

Anyang Zhong Zheng Steel Structure Co., Ltd.

Issue date:

25.08.2022

Expiration date:

24.08.2027

Remarks

This Verification of conformity refers to the above mentioned product and its conformity in regards of above mentioned standard(s) was proven on test sample.

This Verification of conformity was issued on voluntary basis and does not imply meeting all essential requirements, assessment of the series-production or any other restricted Notified Bodies conformity assessment procedure appropriate for the product.



marking remarks:
mark is not sanctioned by the following verification of conformity mark given here as reference, can be only use by the manufacturer after applying all essential requirements from relevant directives

document status can be checked: <https://cert.icrpolska.com/>



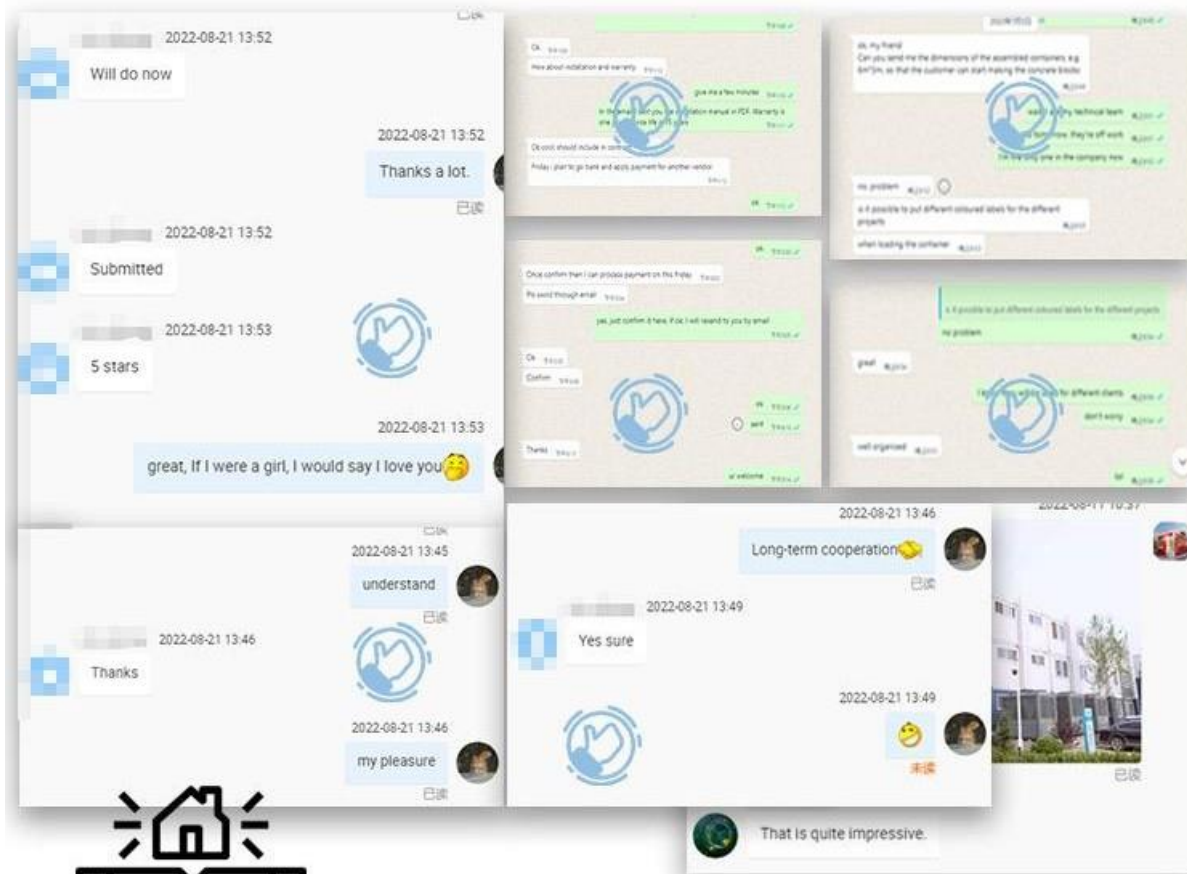
Director: Rafał Kalinowski
Warsaw, 25.08.2022



ICR Polska Co. Ltd.
www.icrpolska.com
icrpolska@icrq.com

Edition: 4.1.1.D of 18.01.2021

CUSTOMER REVIEW




Customers' recognition is the biggest driving force for our progress!



STICK TO QUALITY

Thank you for choosing

X-Spacehome

 +86 187 8327 7613

 jack@x-spacehome.com

 <https://www.x-spacehome.com>

